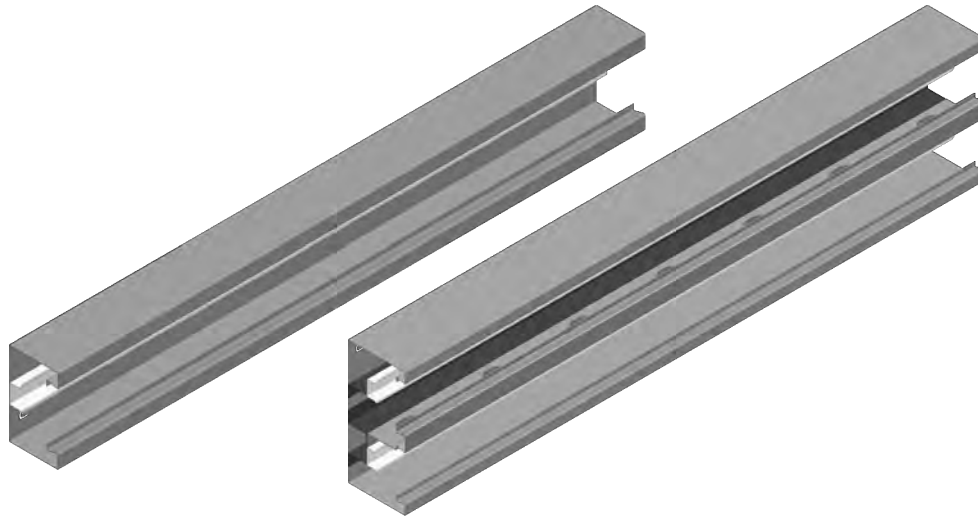


**Wall Trunking System**  
**Heights: H68, H100 mm**  
**Widths: 115, 130, 170, 215 mm**



**Examples of Wall Trunking System Components**

 <p><b>Internal Bend</b> KWKS...</p>	 <p><b>90° Elbow 2 Comp.</b> KPKSd...</p>	 <p><b>Tee</b> TSKS...</p>	 <p><b>External Bend</b> KZKS...</p>	 <p><b>Power Post</b> SPI...</p>
 <p><b>Adjustable Spacer</b> ODA</p>	 <p><b>Notched Connector</b> LKSH...</p>	 <p><b>Blind End</b> ZKH...</p>	 <p><b>1 Gang Surface Box</b> P1kn 71x71</p>	



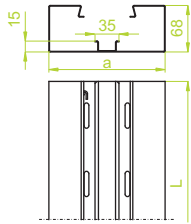
**We offer our Customers covers for all types of fittings and surface trunking systems:**  
**- Thickness: 1.0 mm**





**Wall Trunking (painted)**

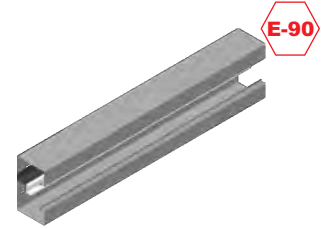
KS



**KS...H68**

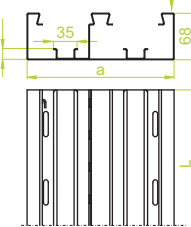
± 1.0 mm

CODE	Widths a mm	Length L mm	kg 1m	Catalogue No.	Qty/m
KS115H68/2	115	2000	2,90	960111	2/4
KS130H68/2	130	2000	3,00	960113	2/4
KS170H68/2	170	2000	3,30	960117	2/4



**Wall Trunking 2 Comp. (painted)**

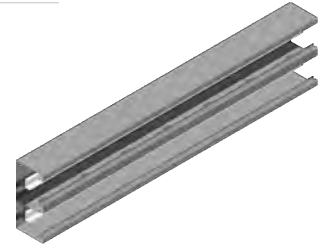
KSd



**KSd215H68**

± 1.0 mm

CODE	Widths a mm	Length L mm	kg 1m	Catalogue No.	Qty/m
KSd215H68/2	215	2000	5,00	960121	2/4



**Cover for Wall Trunking (painted)**

PKS

**PKS**

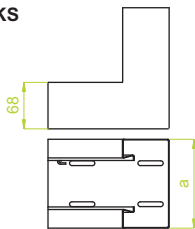
± 1.0 mm

CODE	Widths a mm	Length L mm	kg 1m	Catalogue No.	Qty/m
PKS	82	2000	0,80	900100	10/20



**Internal Bend (painted)**

KWKS

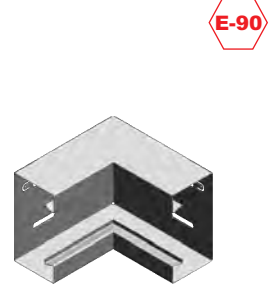


**KWKS...H68**

± 1.0 mm

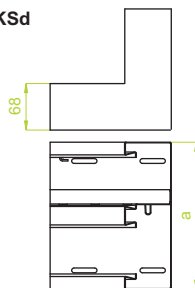
CODE	Widths a mm	kg 1pc	Catalogue No.	Qty
KWKS115H68	115	0,77	960211	8
KWKS130H68	130	0,80	960213	8
KWKS170H68	170	0,90	960217	6

Note: Cover included



**Internal Bend 2 Comp. (painted)**

KWKSd

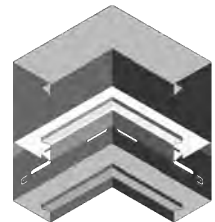


**KWKSd215H68**

± 1.0 mm

CODE	Widths a mm	kg 1pc	Catalogue No.	Qty
KWKSd215H68	215	2,10	960221	4

Note: Cover included



**APPLICATION**

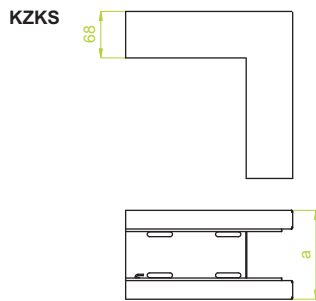
Indoor cable routing for power, voice and data services

**MATERIAL**

Electro-galvanised steel (EGS) to PN-EN 10152. Paint-finished – white to RAL 9010 or grey to RAL 7035. Available to order: L- powder coating in a full range of colours (PC) (info p. 4)



**External Bend  
(painted)**

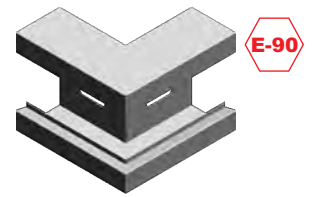


**KZKS...H68**

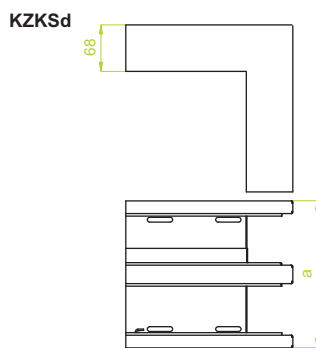
± 1.0 mm

CODE	Widths a mm	kg 1pc	Catalogue No.	qty
KZKS115H68	115	0.65	960311	8
KZKS130H68	130	0.70	960313	8
KZKS170H68	170	0.80	960317	6

Note: Cover included



**External Bend  
2 Comp. (painted)**

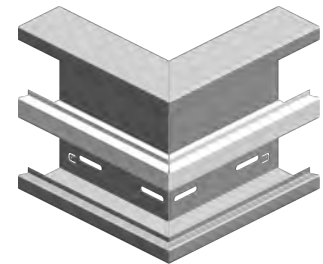


**KZKSd215H68**

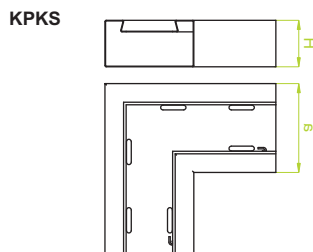
± 1.0 mm

CODE	Widths a mm	kg 1pc	Catalogue No.	qty
KZKSd215H68	215	1,35	960321	4

Note: Cover included



**90° Elbow (painted)**



**KPKS...H68**

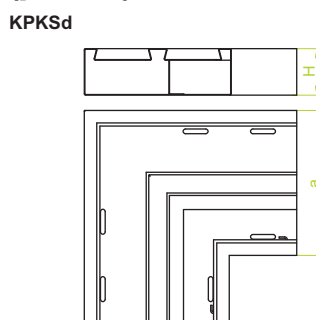
± 1.0 mm

CODE	Widths a mm	kg 1pc	Catalogue No.	qty
KPKS115H68	115	0.92	960411	8
KPKS130H68	130	0.95	960413	8
KPKS170H68	170	1,22	960417	6

Note: Cover included



**90° Elbow 2 Comp.  
(painted)**

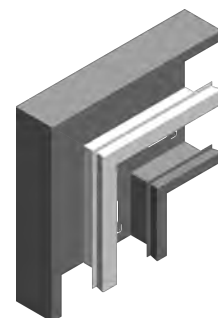


**KPKSd215H68**

± 1.0 mm

CODE	Widths a mm	kg 1pc	Catalogue No.	qty
KPKSd215H68	215	2.00	960421	4

Note: Cover included



**APPLICATION**

Indoor cable routing for power, voice and data services

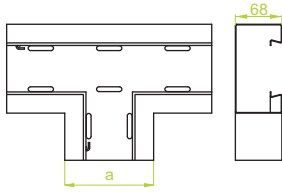
**MATERIAL**

Electro-galvanised steel (EGS) to PN-EN 10152. Paint-finished – white to RAL 9010 or grey to RAL 7035. Available to order: L- powder coating in a full range of colours (PC) (info p. 4)



**Tee (painted)**

TSKS

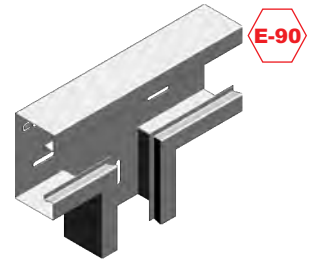


**TSKS...H68**

± 1.0 mm

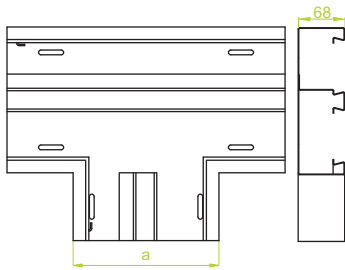
CODE	Widths a mm	kg 1pc	Catalogue No.	Qty
TSKS115H68	115	1,10	960511	6
TSKS130H68	130	1,20	960513	6
TSKS170H68	170	1,45	960517	6

Note: Cover included



**Tee 2 Comp. (painted)**

TSKSd

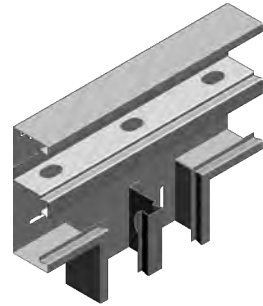


**TSKSd215H68**

± 1.0 mm

CODE	Widths a mm	kg 1pc	Catalogue No.	Qty
TSKSd215H68	215	2,55	950521	4

Note: Cover included

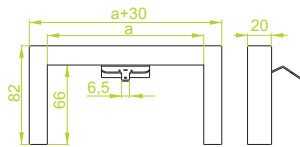


**APPLICATION**

Indoor cable routing for power, voice and data services

**Blind End (painted)**

ZKK



**ZKK...H68**

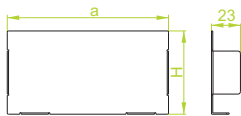
± 1.0 mm

CODE	Widths a mm	kg 1pc	Catalogue No.	Qty
ZKK115H68	115	0.06	961611	50
ZKK130H68	130	0.07	961613	50
ZKK170H68	170	0.09	961617	50
ZKK215H68	215	0.12	961621	50



**Blind End (painted)**

ZK



**ZK...H68**

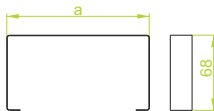
± 1.0 mm

CODE	Widths a mm	kg 1pc	Catalogue No.	Qty
ZK115H68	115	0.06	960611	50
ZK130H68	130	0.07	960613	50
ZK170H68	170	0.09	960617	50
ZK215H68	215	0.12	960621	50



**Trunking Clamp (painted)**

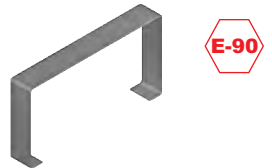
NM



**NM...H68**

± 1.0 mm

CODE	Widths a mm	kg 1pc	Catalogue No.	Qty
NM115H68	115	0.02	960711	100
NM130H68	130	0.02	960713	100
NM170H68	170	0.03	960717	100
NM215H68	215	0.03	960721	100



**MATERIAL**

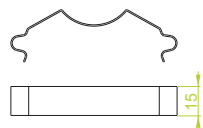
Electro-galvanised steel (EGS) to PN-EN 10152. Paint-finished – white to RAL 9010 or grey to RAL 7035. Available to order: L- powder coating in a full range of colours (PC) (info p. 4)

**APPLICATION**

Creating seamless joints of trunking sections.

**Flat Spring**

SU



**SU**

± 1.0 mm

CODE	Widths a mm	kg 1pc	Catalogue No.	Qty
SU	20	0.01	960800	100



**Notched Connector**

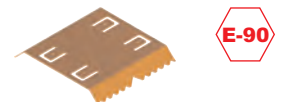
LKS



**LKSH68**

± 1.0 mm

CODE	Widths a mm	kg 1pc	Catalogue No.	Qty
LKSH68	60	0.03	960900	100



**APPLICATION**

Joining together surface trunking sections

**MATERIAL**

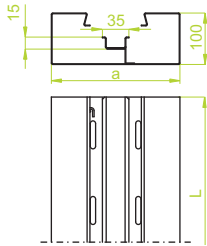
Brass-plated spring steel

Thickn. (ga) ± [mm]: 0.5 0.7 1.0 1.2 1.5 2.0



Wall Trunking (painted)

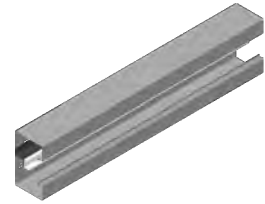
KS



KS...H100

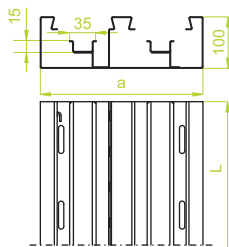
± 1.0 mm

CODE	Widths a mm	Length L mm	kg 1m	Catalogue No.	Qty/m
KS115H100/2	115	2000	3,36	910111	2/4
KS130H100/2	130	2000	3,46	910113	2/4
KS170H100/2	170	2000	3,75	910117	2/4



Wall Trunking  
2 Comp. (painted)

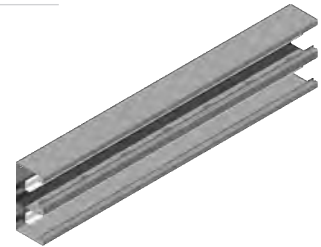
KSd



KSd215H100

± 1.0 mm

CODE	Widths a mm	Length L mm	kg 1m	Catalogue No.	Qty/m
KSd215H100/2	215	2000	5,80	910121	2/4



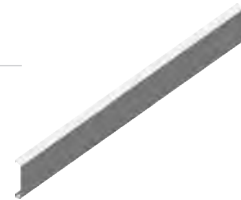
Cover for Wall Trunking  
(painted)

PKS

PKS

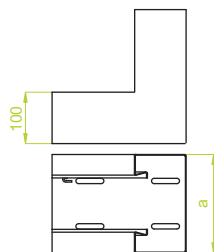
± 1.0 mm

CODE	Widths a mm	Length L mm	kg 1m	Catalogue No.	Qty/m
PKS	82	2000	0,80	900100	10/20



Internal Bend (painted)

KWKS

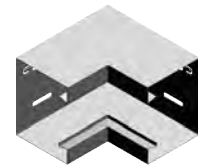


KWKS...H100

± 1.0 mm

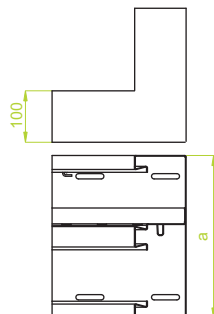
CODE	Widths a mm	kg 1pc	Catalogue No.	Qty
KWKS115H100	115	0,90	910211	8
KWKS130H100	130	0,92	910213	8
KWKS170H100	170	1,00	910217	6

Note: Cover included



Internal Bend  
2 Comp. (painted)

KWKSd

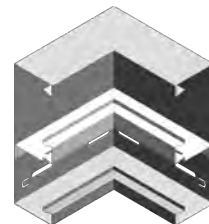


KWKSd215H100

± 1.0 mm

CODE	Widths a mm	kg 1pc	Catalogue No.	Qty
KWKSd215H100	215	2,55	910221	4

Note: Cover included



APPLICATION

Indoor cable routing for power, voice and data services

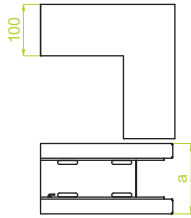
MATERIAL

Electro-galvanised steel (EGS) to PN-EN 10152. Paint-finished – white to RAL 9010 or grey to RAL 7035. Available to order: L- powder coating in a full range of colours (PC) (info p. 4)



**External Bend (painted)**

KZKS

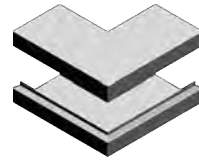


**KZKS...H100**

± 1.0 mm

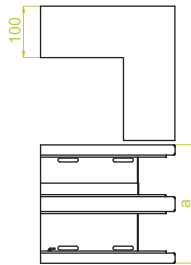
CODE	Widths a mm	kg 1pc	Catalogue No.	Qty
KZKS115H100	115	0.75	910311	8
KZKS130H100	130	0.80	910313	8
KZKS170H100	170	0.91	910317	6

Note: Cover included



**External Bend  
2 Comp. (painted)**

KZKSd

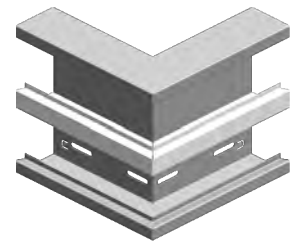


**KZKSd215H100**

± 1.0 mm

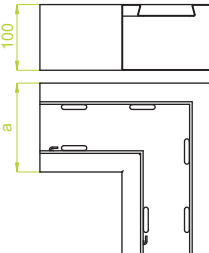
CODE	Widths a mm	kg 1pc	Catalogue No.	Qty
KZKSd215H100	215	1.54	910321	4

Note: Cover included



**90° Elbow (painted)**

KPKS

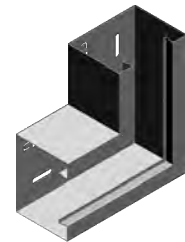


**KPKS...H100**

± 1.0 mm

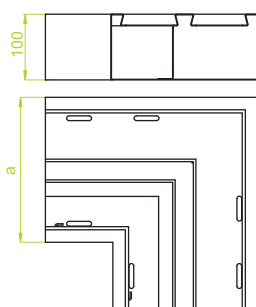
CODE	Widths a mm	kg 1pc	Catalogue No.	Qty
KPKS115H100	115	1.00	910411	8
KPKS130H100	130	1.10	910413	8
KPKS170H100	170	1.40	910417	6

Note: Cover included



**90° Elbow 2 Comp.  
(painted)**

KPKSd

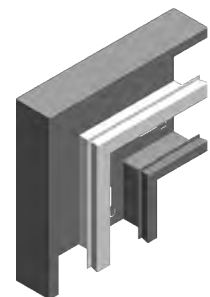


**KPKSd215H100**

± 1.0 mm

CODE	Widths a mm	kg 1pc	Catalogue No.	Qty
KPKSd215H100	215	2.32	910421	4

Note: Cover included



**APPLICATION**

Indoor cable routing for power, voice and data services

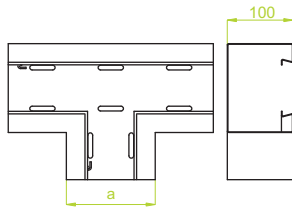
**MATERIAL**

Electro-galvanised steel (EGS) to PN-EN 10152. Paint-finished – white to RAL 9010 or grey to RAL 7035. Available to order: L- powder coating in a full range of colours (PC) (info p. 4)



**Tee (painted)**

TSKS

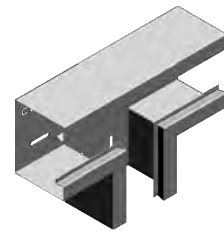


**TSKS...H100**

± 1.0 mm

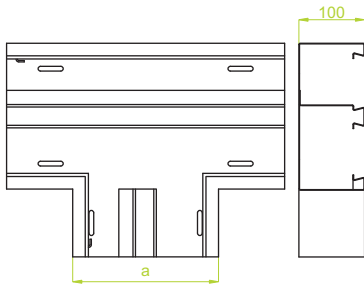
CODE	Widths a mm	kg 1pc	Catalogue No.	Qty
TSKS115H100	115	1,20	910511	6
TSKS130H100	130	1,30	910513	6
TSKS170H100	170	1,55	910517	6

Note: Cover included



**Tee 2 Comp. (painted)**

TSKSd

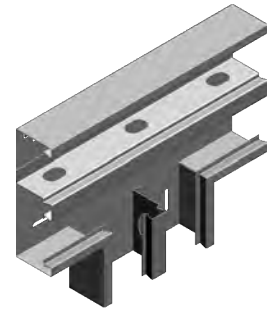


**TSKSd215H68**

± 1.0 mm

CODE	Widths a mm	kg 1pc	Catalogue No.	Qty
TSKSd215H100	215	2,95	910261	4

Note: Cover included

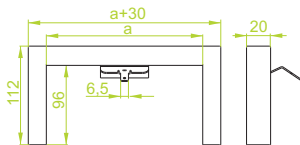


**APPLICATION**

Indoor cable routing for power, voice and data services

**Blind End (painted)**

ZKK



**ZKK...H100**

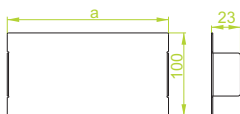
± 1.0 mm

CODE	Widths a mm	kg 1pc	Catalogue No.	Qty
ZKK115H100	115	0.10	910811	50
ZKK130H100	130	0.11	910813	50
ZKK170H100	170	0.15	910817	50
ZKK215H100	215	0.20	910821	50



**Blind End (painted)**

ZK



**ZK...H100**

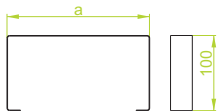
± 1.0 mm

CODE	Widths a mm	kg 1pc	Catalogue No.	Qty
ZK115H100	115	0.10	910711	50
ZK130H100	130	0.11	910713	50
ZK170H100	170	0.15	910715	50
ZK215H100	215	0.20	910717	50



**Trunking Clamp (painted)**

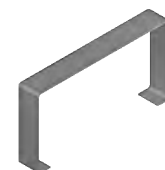
NM



**NM...H100**

± 1.0 mm

CODE	Widths a mm	kg 1pc	Catalogue No.	Qty
NM115H100	115	0.02	910721	100
NM130H100	130	0.02	910723	100
NM170H100	170	0.03	910725	100
NM215H100	215	0.04	910727	100



**MATERIAL**

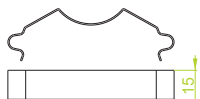
Electro-galvanised steel (EGS) to PN-EN 10152. Paint-finished – white to RAL 9010 or grey to RAL 7035. Available to order: L- powder coating in a full range of colours (PC (info p. 4))

**APPLICATION**

Creating seamless joints of trunking sections.

**Flat Spring**

SU



**SU**

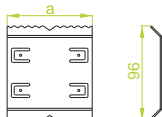
± 1.0 mm

CODE	Widths a mm	kg 1pc	Catalogue No.	Qty
SU	20	0.01	960800	100



**Notched Connector**

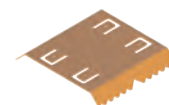
LKS



**LKSH100**

± 1.0 mm

CODE	Widths a mm	kg 1pc	Catalogue No.	Qty
LKSH100	60	0.06	910729	100



**MATERIAL**

Brass-plated spring steel

**APPLICATION**

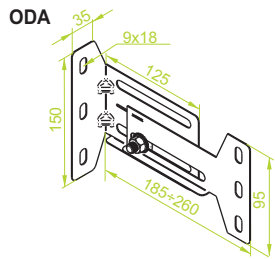
Joining together surface trunking sections

Thickn. (ga) ± [mm]: 0.5 0.7 1.0 1.2 1.5 2.0



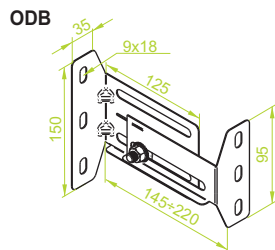


**Adjustable Spacer**



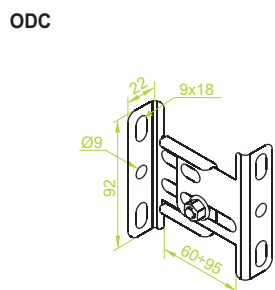
**ODA**

CODE	Length L mm	kg 1 pc	Catalogue No.	Qty
ODA	185-260	0.37	752026	40



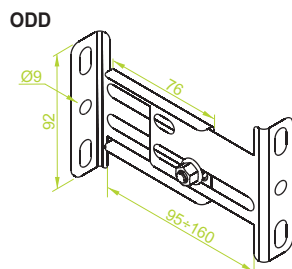
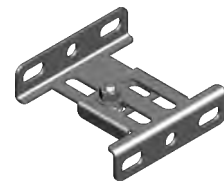
**ODB**

CODE	Length L mm	kg 1 pc	Catalogue No.	Qty
ODB	150-225	0.37	752122	40



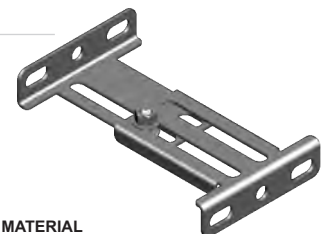
**ODC**

CODE	Length L mm	kg 1 pc	Catalogue No.	Qty
ODC	60-95	0.13	752222	40



**ODD**

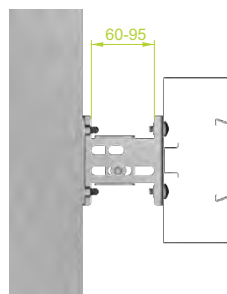
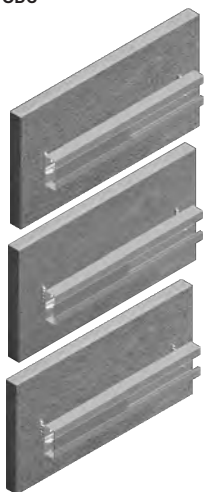
CODE	Length L mm	kg 1 pc	Catalogue No.	Qty
ODD	95-160	0.17	752223	40



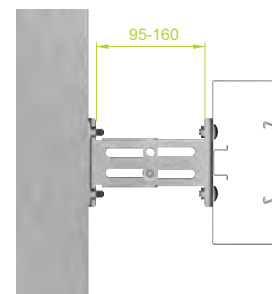
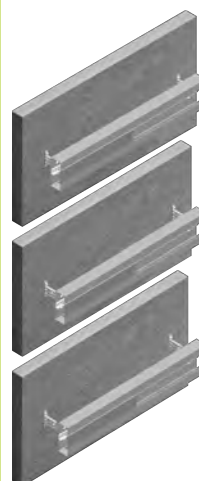
**APPLICATION**  
Installing trunking routes in the proper distance from the wall

**MATERIAL**  
Steel, strip-galv. acc. to the Sendzimir method to PN-EN 10346:2011 (SG)  
Available to order:  
F- steel, hot-dip galv. to PN-EN ISO 1461:2011 (HDG).  
E- stainless steel (SS)  
L- powder coating in a full range of colours (PC) (info p. 4)

Application Example of Adjustable Spacer ODB in Combination with Wall Trunking ODC



ODD







**1 Gang Surface Box**

**P1KN71x71**

CODE	Depth mm	Spacing of Mounting Holes mm	kg 1pc	Catalogue No.	Qty
P1KN71x71	48	60	0.06	022070	26



**APPLICATION**

For on-wall installation of power socket outlets in surface trunking

**MATERIAL**

PA 6 Polyamide self-extinguishing.

**2 Gang Surface Box**

**P2KN71x71**

CODE	Depth mm	Spacing of Mounting Holes mm	kg 1pc	Catalogue No.	Qty
P2KN71x71	48	60	0.08	022071	26



Alternative lateral interconnection into

**Important!**  
Boxes are universal - fits to all socket and switches types

**APPLICATION**

For on-wall installation of power socket outlets in surface trunking

**MATERIAL**

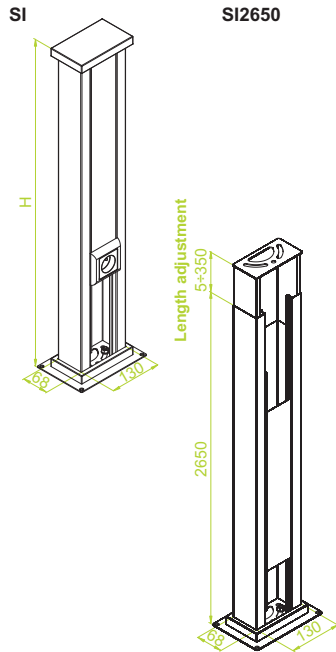
PA 6 Polyamide self-extinguishing.

**Application Example of Wall Trunking**





**Power Post**



**SI...**

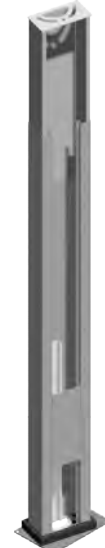
± 1.0 mm

CODE	Heights H mm	kg 1pc	Catalogue No.	Qty
SI250	250	1.85	910911	8
SI500	500	2.85	910913	4
SI700	700	3.65	910915	4

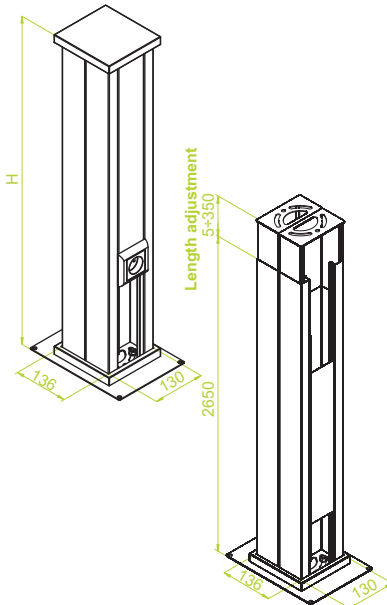
**SI2650**

± 1.0 mm

CODE	Heights a mm	kg 1pc	Catalogue No.	Qty
SI2650	2650	11.50	910917	1



**SPI**



**SPI...**

± 1.0 mm

CODE	Heights H mm	kg 1pc	Catalogue No.	Qty
SPI250	250	3.15	911011	6
SPI500	500	5.15	911013	4
SPI700	700	6.80	911015	4

**SPI2650**

± 1.0 mm

CODE	Heights a mm	kg 1pc	Catalogue No.	Qty
SPI2650	2650	22.30	911017	1

**APPLICATION**  
Indoor cable routing for power, voice and data services.

**MATERIAL**

Electro-galvanised steel (EGS) to PN-EN 10152. Paint-finished – white to RAL 9010 or grey to RAL 7035. Available to order: L- powder coating in a full range of colours (PC) (info p. 4)