

CONSTRUCTION ASSEMBLY INSTRUCTIONS DP-DTHKSN-WZ



Producer: BAKS – Kazimierz Sielski

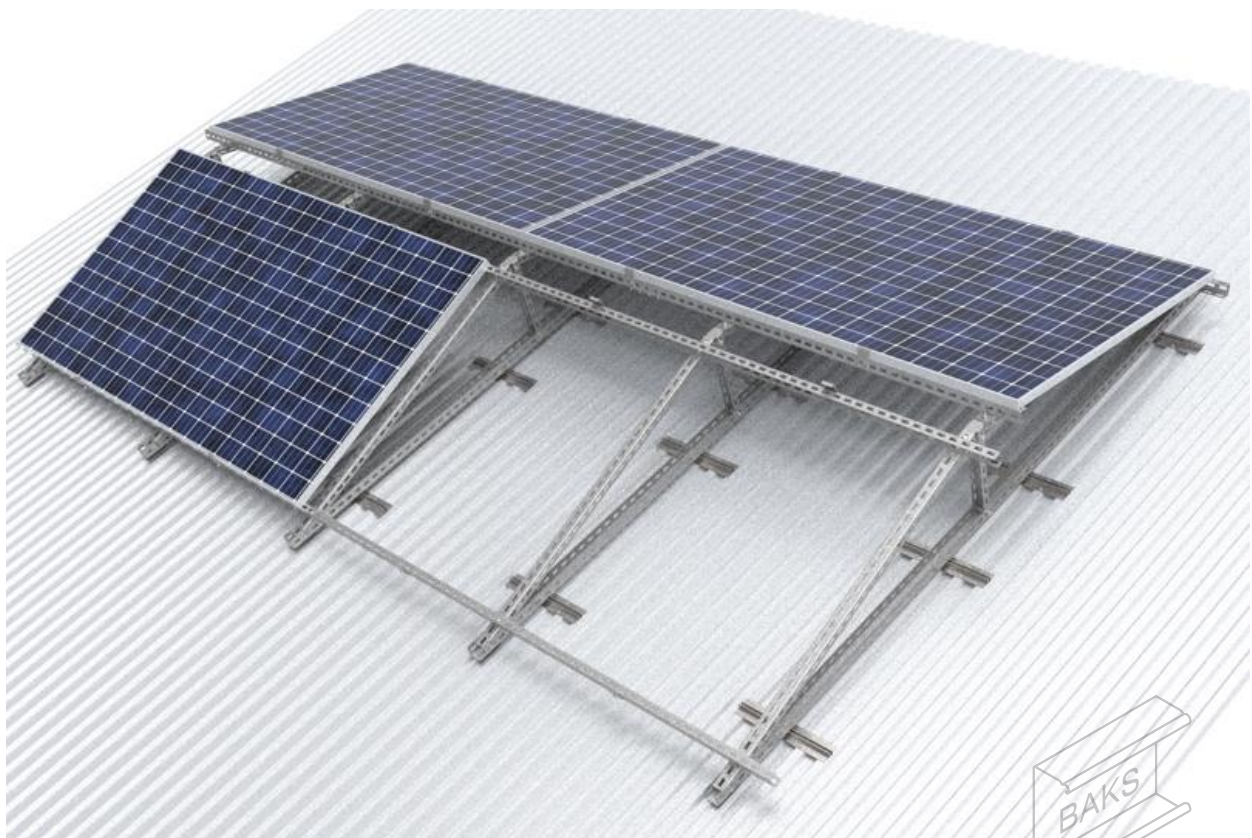
ul. Jagodne 5

05-480 Karczew

Poland

Steel structure for flat roof in the version mounted on SMA40 rails.

Mounting of PV panels in a horizontal arrangement (horizontally).



1. Essential tools for assembling the structure

- Allen spanner (ampoule spanner) size 6
- Cordless screwdriver with speed and torque control
- Hexagon socket wrench, size 6 for screwdriver head
- Open-end spanner, size 13, 15, 17 mm
- Ratchet spanner with socket size 13, 15, 17 mm
- Extension piece 100-120mm for socket spanners
- Rubber mallet
- Torque spanner, range 10-45 Nm

2. General information:

- Possibility of using the structure in wind and snow zones in accordance with the following standards: PN-EN 1991-1-3 and PN-EN 1991-1-4.
- Before installing the structure, read the installation instructions for photovoltaic panels Ballast values determined individually by a licensed builder
- SAM8x screws... E and NUTS NRM8PV should be tightened with a torque of 12-14 Nm
- When tightening the SGKFM8x20 and SGKFM10x20PV screw, hold the screw head with your hand the head of the screw in such a position that the undersink locks on the walls of the hole where the screw is installed, and then using a screwdriver tighten the screw slowly until it locks in the hole. At the final stage, tighten the screw with a screwdriver successively with a torque of: M8 - 22 Nm; M10 - 42 Nm
- Tighten the screws SMM10x...F to a torque of 30 Nm

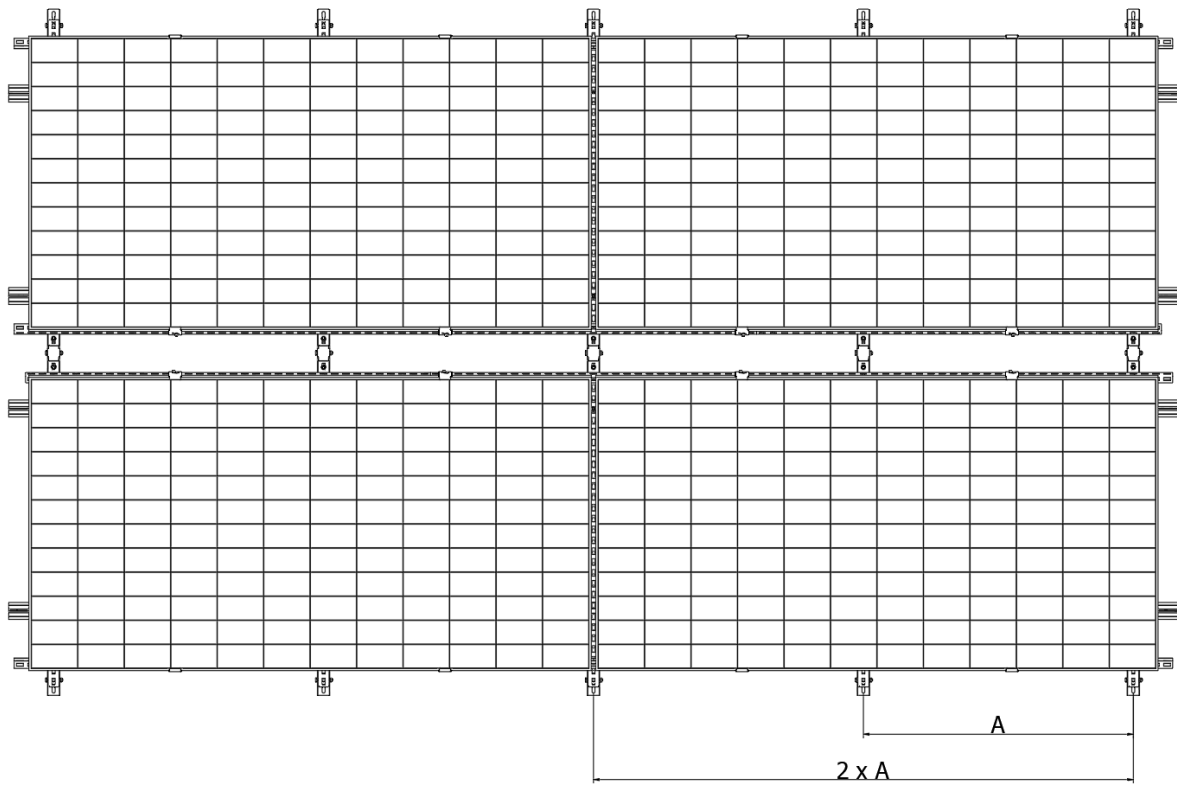
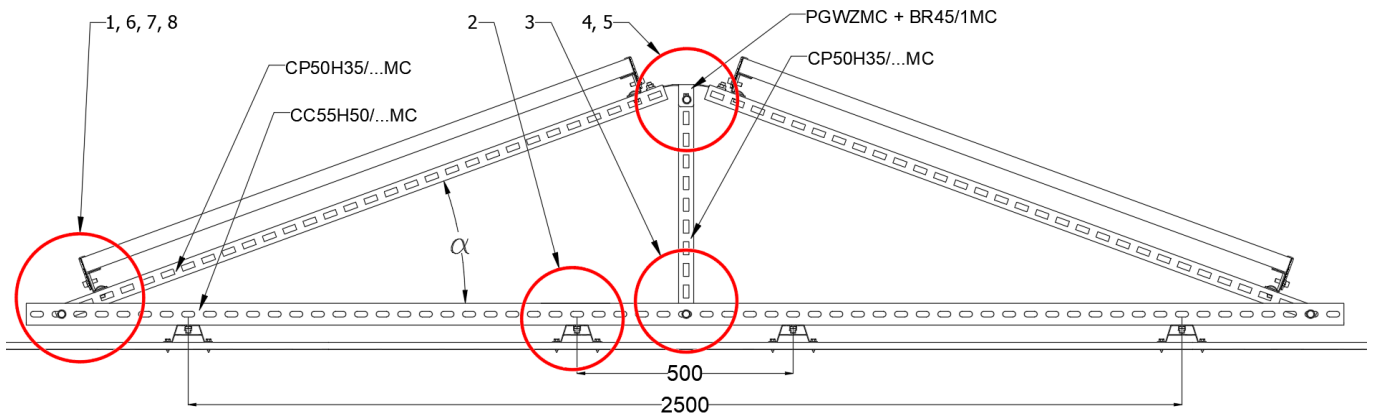


3. Summary of components of the DP-DTHKSN-WZ construction

| Nr | Product | Name of product | Designation in construction |
|----|----------------------|-----------------|---|
| 1 | Channel | CC55H50/...MC | Main profile |
| 2 | Channel | CP50H35/...MC | Structure assembly profile |
| 3 | Channel | CC50H35/...MC | Panel support profile |
| 4 | Channel connector | LCCW50H35MC | Connecting channels CC50H35/...MC |
| 5 | Hexagonal head screw | SMM10x70F | Screw connecting the supporting channels of the structure |
| 6 | Washer | PP10F | Washer |
| 7 | Top base east-west | PGWZMC | Assembly of the structure in the East-West variant. |
| 8 | Side holder | BUFMC | Panel mounting holder |
| 9 | Screw | SAM8x25E | Mounting screw for holders and wind shields |
| 10 | Rhomboid nut | NRKM8PV | Rhomboid nut |
| 11 | Spring washer | PS8E | Spring washer |
| 12 | Enlarged washer | PW8E | Enlarged washer |
| 13 | Mushroom head screw | SGKFM10x20 | Screw + flange nut |
| 14 | Base | SMA40 | Aluminum base |
| 15 | Self-drilling screw | SMDP6,0x25E | Anchoring the SMA40 base to the roof |
| 16 | Screw | SSZ8x30E | Mounting screw SMA40 |



4. Assembly of DP-DTHKSN-WZ construction



| Combination of wind "W" and snow "S" * zones | Maximum distance of subsequent "A" frames |
|--|---|
| 1W-1S; 1W-2S; 1W-3S | 2,0 m |
| 1W-4S | 1,8 m |
| 2W-2S; 2W-3S | 1,4 m |
| 3W-1S | 1,6 m |
| 3W-3S | 1,3 m |
| 3W-5S | 1,1 m |
| Other combinations of zones | Selected individually after consultation |

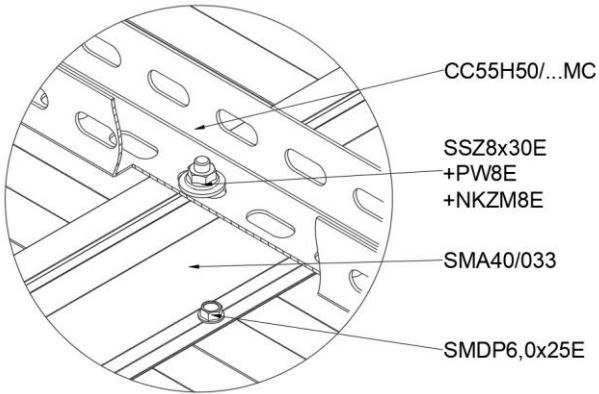
Table 1 Installation distance of subsequent frames of the photovoltaic structure depending on the combination of wind and snow zones

*1 wind zone below 300m asl; 3 wind zone below 500m asl;

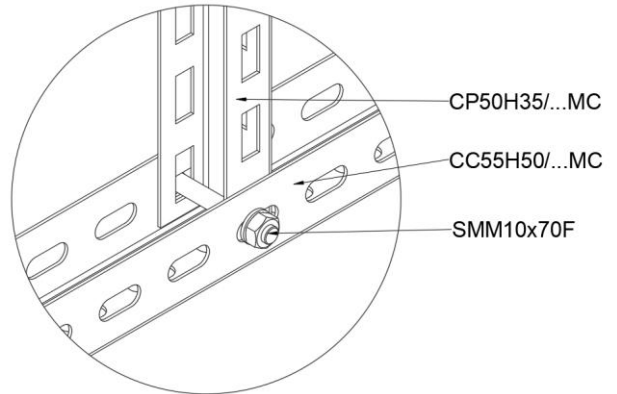
1 and 3 snow zone below 300m asl; 5 snow zone below 500m asl.



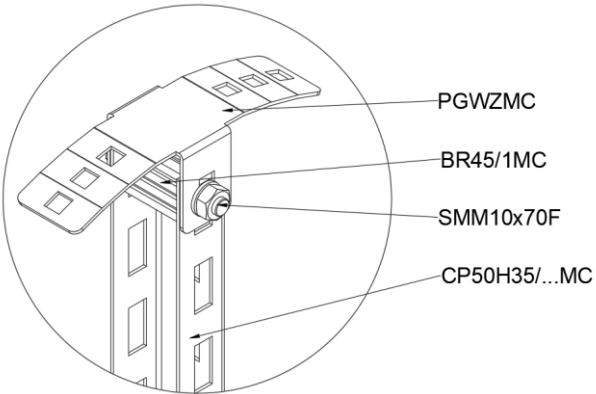
1



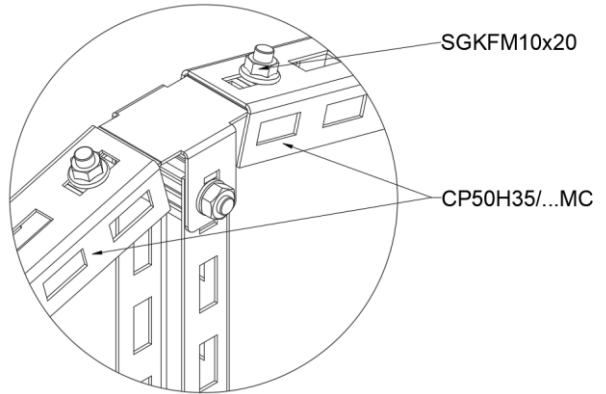
2



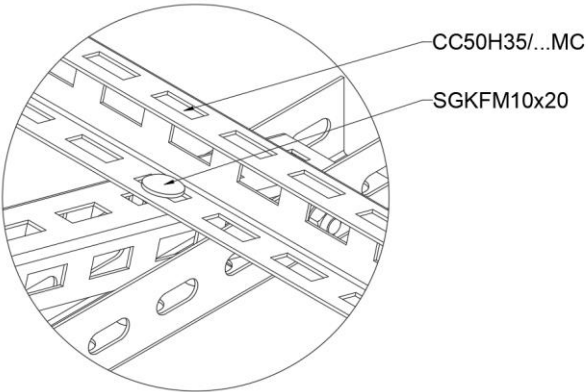
3



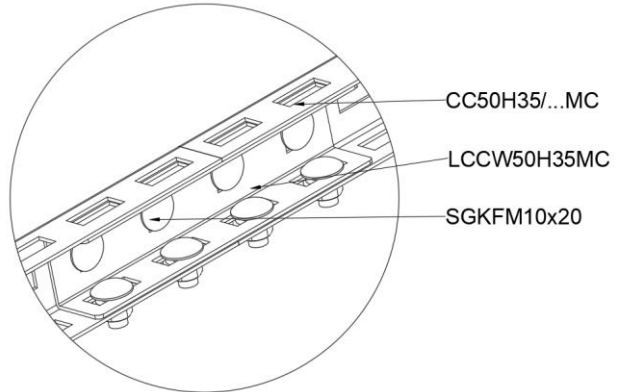
4



5



6



7

