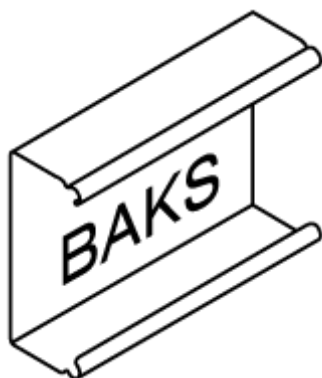


CONSTRUCTION ASSEMBLY INSTRUCTIONS DS-V6aN



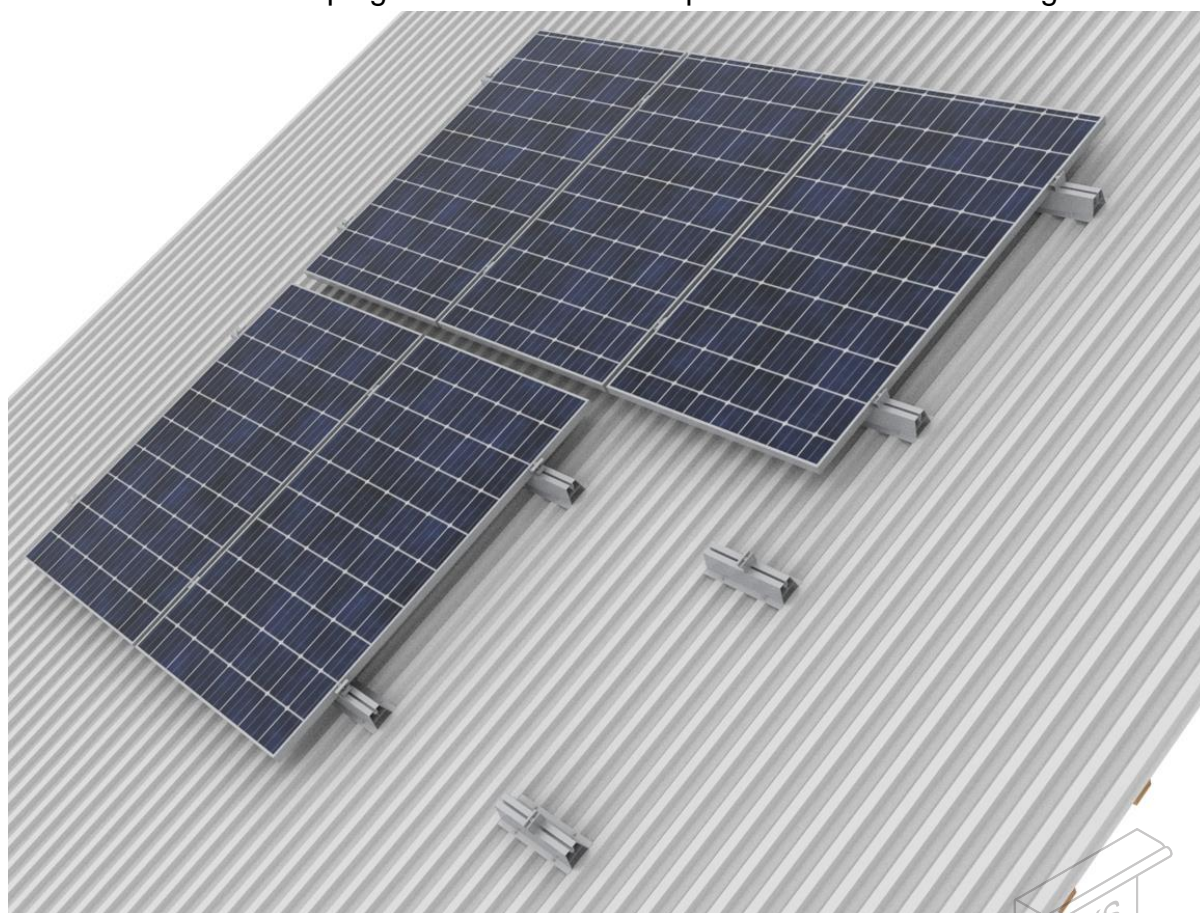
Manufacturer: BAKS – Kazimierz Sielski

ul. Jagodne 5

05-480 Karczew

Poland

Construction for panels in a vertical arrangement (vertically).
Mounted on a sloping roof covered with trapezoidal sheet metal – high rail.



1. Necessary tools for assembling structures

- Allen key (ampoule) size 6
- Cordless screwdriver with speed and torque control
- Hexagonal bit, Allen size 6 for screwdriver head
- Ratchet wrench with 10 mm caps,
- Extension 100-120mm for socket wrenches
- Rubber hammer
- UV-resistant roofing sealant
- Torque wrench, range 10-45 Nm

2. General information:

- Possibility of sin the structure in wind and snow zones in accordance with the following standards:
EN 1991-1-3 and EN 1991-1-4.
- **Before starting the assembly of the structure, you should read the installation instructions for photovoltaic panels**
- Cutting elements is allowed only with low-speed reciprocating saws and hand saws with tools made of high quality steel, this avoids excessive heating of the material.
- **SAM8x...E** screws with NRM8F nuts should be tightened with a torque of 12-14 Nm



3. Assembly of structure type DS-V6aN

- Determination of the place of assembly of the structure
- Determination of the position of the extreme aluminum rails **SMA.../033**
- Aluminium rails should be tightened with at least 4 **SMDP6,0x25E** self-drilling screws
- The edge of the PV panel must be at least 500 mm from the edge of the roof
- The spacing of subsequent aluminum rails depends on the mounting zones of the PV panels
- **PUPK** grounding pads should be placed in the places where **PUFK** intermediate handles are mounted
- If there is an even number of modules in a single row of construction, grounding washers are mounted every second pair of modules
- In the case of an odd number of modules, **PUPK** washers should be additionally added under the **PUFK** extreme handles to ensure grounding of the last module as well

4. List of components included in the DS-V6aN design

Nr	Name	Product symbol	Purpose in construction
1	Aluminium rail	SMA.../033	Mounting profile
2	Self-drilling screw	SMDP6,0x25E	Installation of the rail to the roof
3	Side handle	BUFK...	Side clamp fixing panels
4	Intermediate handle	PUFK	Intermediate clamp fixing the panels
5	Grounding pad	PUPK	Grounding of panels
6	Screw	SAM8x...E	Clamp mounting screw
7	Spring washer	PS8E	Washer



