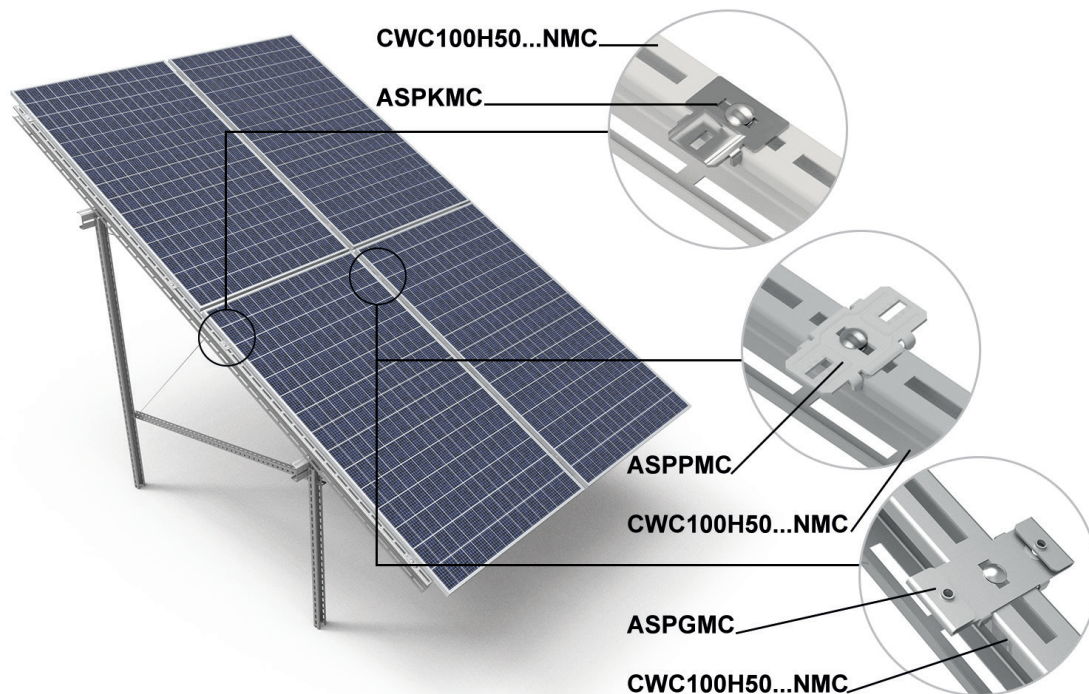


**ASPKMC - end bolt adapter for PV module**  
**ASPPMC - middle bolt adapter for PV module**  
**ABGMC - side threaded adapter for PV module**  
**APGMC - middle threaded adapter for PV module**



**Application of ASPKMC, ASPPMC, ABGMC, APGMC**

Clamp-free installation of PV modules to the structure using bolts through the mounting holes in the module frames.

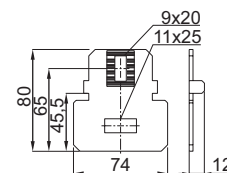
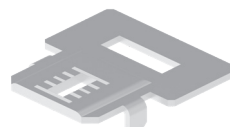
**Advantages**

- Stable installation of modules with bolts directly to the structure without the need to use side and middle mounting clamps
- Thanks to installation using the mounting holes in the module frame, there is no need to check the permitted mounting zones on the module frame
- Special serrations at the contact points with the module frame ensure electrical continuity with the structure
- Quick installation of modules from the underside of the structure

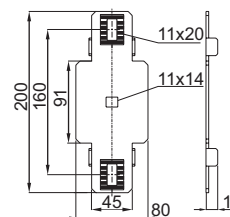
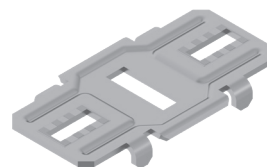
**Technical description**

- Structural steel with Magnelis®, MagiZinc®, PosMAC® coating
- ASPKMC, ASPPMC  
For installation to the structure use 1 set SGKFM10x20  
For module installation use 1 set SGKFM8x14
- ABGMC, APGMC  
For installation to the structure use 1 set SGKFM10x20  
For module installation use 1 set SSZ8x14F + PP8F

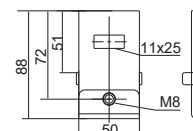
**ASPKMC**



**ASPPMC**



**ABGMC**



**APGMC**

